

Installation & Operating Instructions / Valve Types 60, 61, & 67

PREPARATION

Ammark Type 60, 61, and 67 valves may be utilized interchangeably in two-pipe steam, chilled water, or hot water systems.



Type 61 Straight Valve

Hard water, dirt particles, chemicals, and other foreign matter in the heating medium may impair the function of the valves. If necessary, flush the system thoroughly. If utilizing cleaners or treatments, make sure they are safe for EPDM. Oil or hydrocarbon based treatments should not be used.



Type 60 Angle Valve

INSTALLATION

Install the valve on the inlet side of the heating unit with the arrow on the valve body in the same direction as the flow. Appropriate temperature-rated sealing tape may be used on the threaded connections - do not use sealing compounds on the compression connection



Type 67 Side Angle Valve

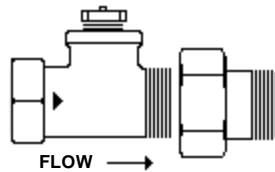
- Use EPDM safe treatments only!
- Install with flow in the direction of the arrow on the valve body!
- If using copper connection, do not sweat tailpiece with valve attached!

between the tailpiece and the valve body.

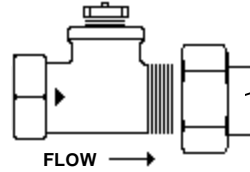
Standard connections are female threads on inlet and male threaded tailpiece on outlet. A copper sweat tailpiece is also available.



FPT x Male Threaded Union Tailpiece



FPT x Copper Sweat Union Tailpiece



Do not sweat the tailpiece with the valve attached!

CAPACITIES

Max System Temperature: 250 °F
Max Sensor Temperature: 120 °F
Max Operating Pressure: 200 psig
Max Test Pressure: 725 psig
Max Differential Pressure: 40 Ft.W.G.
Max Steam Pressure: 15 psig

Valve Size		
1/2"	3/4"	1", 1 1/4"
Cv		
1.2	2.1	4.9
Cv is the flow rate, in gpm, with 1 psi pressure drop across the valve.		

Capacity (MBh)	Valve Size		
	1/2"	3/4"	1", 1 1/4"
	Pressure Drop (Ft.W.G.)		
15	3.52	1.20	0.22
20	6.25	2.13	0.39
25	9.77	3.33	0.61
30	14.07	4.79	0.88
35	19.15	6.52	1.20
Capacity is based on 20°F temperature drop. Pressure drops based on fully open valve. Ft.W.G. x .433 = psig 1 MBh = 1,000 Btu/h			

Ammark Corp, 230 West Parkway, Unit 12, Pompton Plains NJ 07444 USA
Phone: (973) 616-2555 Fax: (973) 616-0246 Url: www.ammarkcorp.com

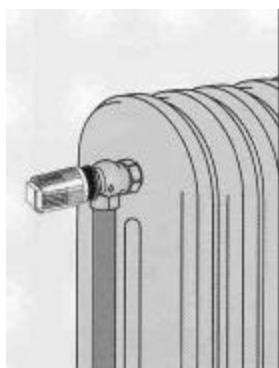
INSTALLATION DIMENSIONS

	Part #	Size	A	B	C-62	C-63	C-65	C-66	C-68	C-69
	61.5	1/2	3/4	—	4 1/2	4 1/2	2 3/4	3 1/2	3 3/4	3 1/4
	61.75	3/4	4	—	4 1/2	4 1/2	2 3/4	3 1/2	3 3/4	3 1/4
	61.100	1	5	—	5	5	3 3/4	4	4 1/4	3 3/4
	61.125	1 1/4	7	—	5	5	3 3/4	4	4 1/4	3 3/4
	60.5	1/2	2	1	4 1/4	4 1/2	2 1/2	3 3/4	3 3/4	3 1/4
	60.75	3/4	2 1/2	1	4 1/4	4 1/2	2 1/2	3 3/4	3 3/4	3 1/4
	60.100	1	3	1 1/4	4 1/2	4 3/4	2 3/4	3 1/2	4	3 1/2
	60.125	1 1/4	3 3/4	2 3/4	4 1/2	4 3/4	2 3/4	3 1/2	4	3 1/2
	67.5	1/2	2 1/4	1 1/2	4 1/2	4 3/4	3	4	4	3 1/2
	67.75	3/4	2 1/2	1 1/2	4 1/2	4 3/4	3	4	4	3 1/2
	67.100	1	3 1/4	1 1/2	5	5 1/4	3 1/2	4 1/2	4 1/2	4
	67.125	1 1/4	4	3	5	5 1/4	3 1/2	4 1/2	4 1/2	4

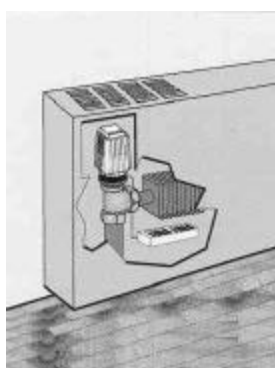
All dimensions / sizes are in inches. Dimension 'A' is with NPT tailpiece. Dimension 'C' indicates installation clearance for each control/valve combination (distance from center of pipe to the end of the control).

TYPICAL INSTALLATIONS

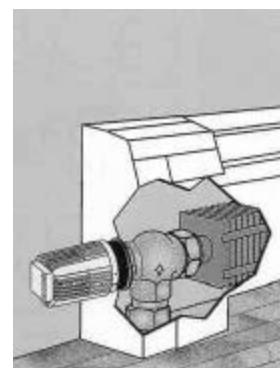
All Ammark controls fit all valve types and operate in any orientation. When using air-sensing controls, insure accurate temperature control by selecting control/valve combinations which allow unrestricted flow of ambient room air around the sensor.



Type 62 Control with Type 67 Side Angle Valve



Type 63 Control with Type 60 Angle Valve



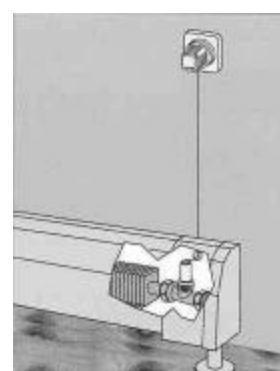
Type 62 Control with Type 67 Side Angle Valve



Type 63 Control with Type 60 Angle Valve



Type 66 Control with Type 61 Straight Valve



Type 66 Control with Type 61 Straight Valve