

Water Manager BW & BW-PRV Filter Cleaning / Replacement and Installation Instructions

FILTER CLEANING OR REPLACEMENT

In cases of failure to backwash the filter, or in installations with unusually large amounts of sediment, models BW and BW-PRV may require periodic manual cleaning of the filter bowl, and cleaning or replacement of the stainless steel filter element. This will require complete disassembly of the filter.

To completely disassemble the filter: (figure 1)

- ✓ Close the isolating valves upstream and downstream of the Water Manager.
- ✓ Rotate the activation handle to the backwash position.
- ✓ For easiest disassembly, remove the Water Manager from the flange installation.
- ✓ On the bottom of the filter, remove the hex nut and washer with an Ammark combination tool.
- ✓ Unscrew the filter bowl using an Ammark filter bowl wrench by turning it counter-clockwise. The bowl is very tight and will take some pressure to loosen.
- ✓ Holding the filter housing upright, remove the filter bowl with the internal spring and rubber gasket and set aside for cleaning, if necessary.
- ✓ Holding the filter housing upright, pull down the internal assembly. The stainless steel mesh filter will be on the top of this assembly. Unscrew the filter to either replace or manually clean it.
- ✓ Clean or replace any parts required. Use silicon grease to lubricate, prior to reassembly.
- ✓ Reassemble. Replace the mesh filter onto the internal assembly. Push the assembly up into the filter housing, ensuring the white assembly is pulled down far enough to reach the hex nut when it is replaced with the filter bowl. Run a blunt tool around the gasket to ensure it is seated properly as it is re-inserted into the filter housing.
- ✓ Replace the filter bowl, ensuring the spring is seated in the bowl and the gasket is placed on the top lip of the bowl. You may need to use the filter bowl wrench to apply enough pressure to close securely.
- ✓ Replace the hex nut and washer, ensuring the hex nut attaches completely to the white internal assembly.
- ✓ Re-install filter, per filter installation instructions. Open valves, test backwash and check for leaks.

- ✓ **DO NOT EXPOSE THE FILTER BODY TO FREEZING, CHEMICALS, DYES, OR SOLVENTS.**
- ✓ **CLEAN WITH COLD WATER ONLY.**
- ✓ **DO NOT INSTALL IN AREAS EXPOSED TO DIRECT SUNLIGHT.**

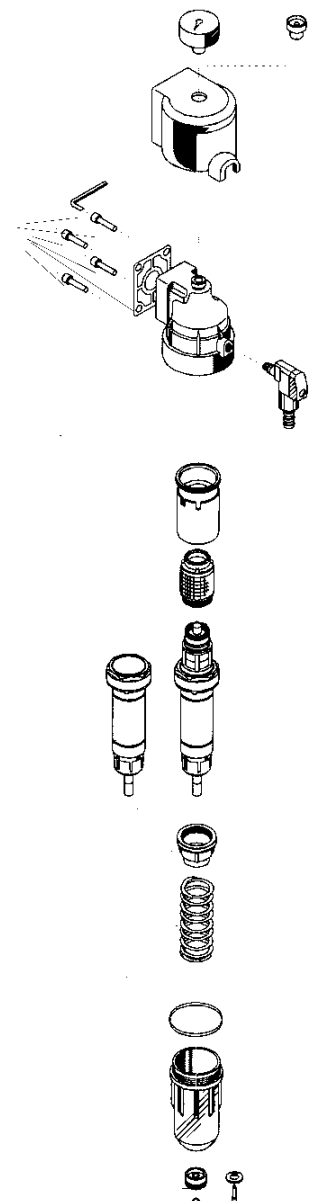
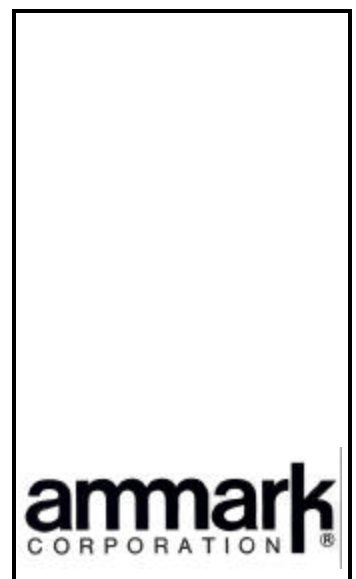


Figure 1

Water Manager BW & BW-PRV Filter Cleaning/Replacement and Installation Instructions

FILTER INSTALLATION (continued)

Each BW and BW-PRV Model is supplied with four set screws to secure the filter to the flange, a gasket to seal the filter/flange connection, and a combination tool, which is used to tighten the set screws and aids pressure setting adjustment (BW-PRV only).

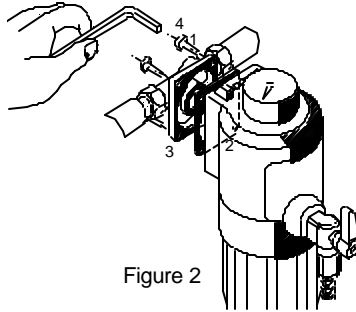


Figure 2

The filter must be installed vertically with the filter bowl at the bottom. Attach the filter body to the flange with the gasket between the filter body and the flange. Use the combination tool to tighten the set screws in a diagonal sequence (figure 2) to help insure that the filter is seated properly and the joint between filter and flange is sealed pressure-tight.

Make sure that the ball valve is in the “Operation” position. Open the isolating valves to allow flow and observe the filter under pressure to make sure all joints are sealed correctly. The handle of the ball valve is equipped with an electronic timer to indicate that the maintenance (backwash) function should be performed. Remove the small yellow slip of paper from the ball valve’s handle to activate the timer. The LED will flash twice to indicate that the timer is operating.

ammark
CORPORATION®

*Backwash often to ensure
a long life for your filter!*